



CTU

CZECH TECHNICAL
UNIVERSITY
IN PRAGUE

Czech Technical University in Prague

Martin Novák,
martin.novak@fs.cvut.cz

Associate professor, Faculty of Mechanical Engineering



Czech Technical University in Prague

- **Founded 1707**
- **8 faculties**
- **21 000 students**





Czech Technical University in Prague

Faculties

- **Civil Engineering**
- **Mechanical Engineering**
- **Electrical Engineering**
- **Nuclear Sciences and Physical Engineering**
- **Architecture**
- **Transportation Sciences**
- **Biomedical Engineering**
- **Information Technology**





Faculty of Mechanical Engineering

- **15 departments**
- **~3000 students**





Faculty of Mechanical Engineering departments

Mechanics, Biomechanics and Mechatronics
Instrumentation and Control Engineering
Fluid Dynamics and Thermodynamics
Designing and Machine Components
Energy Engineering
Environmental Engineering
Automotive, Combustion Engine and Railway Engineering
...





Department of Instrumentation and Control Engineering

Departments general scope: Automation

**Staff: 6 professors, 7 associate professors, 18 assistants,
16 PhD students**

Teaching:

1st year ~500 students

2th year ~350 students

3th year ~250 students



Department of Instrumentation and Control Engineering

**Graduate students from the department (automation)
~ 50 per year (~20 master, rest. bachelor)**

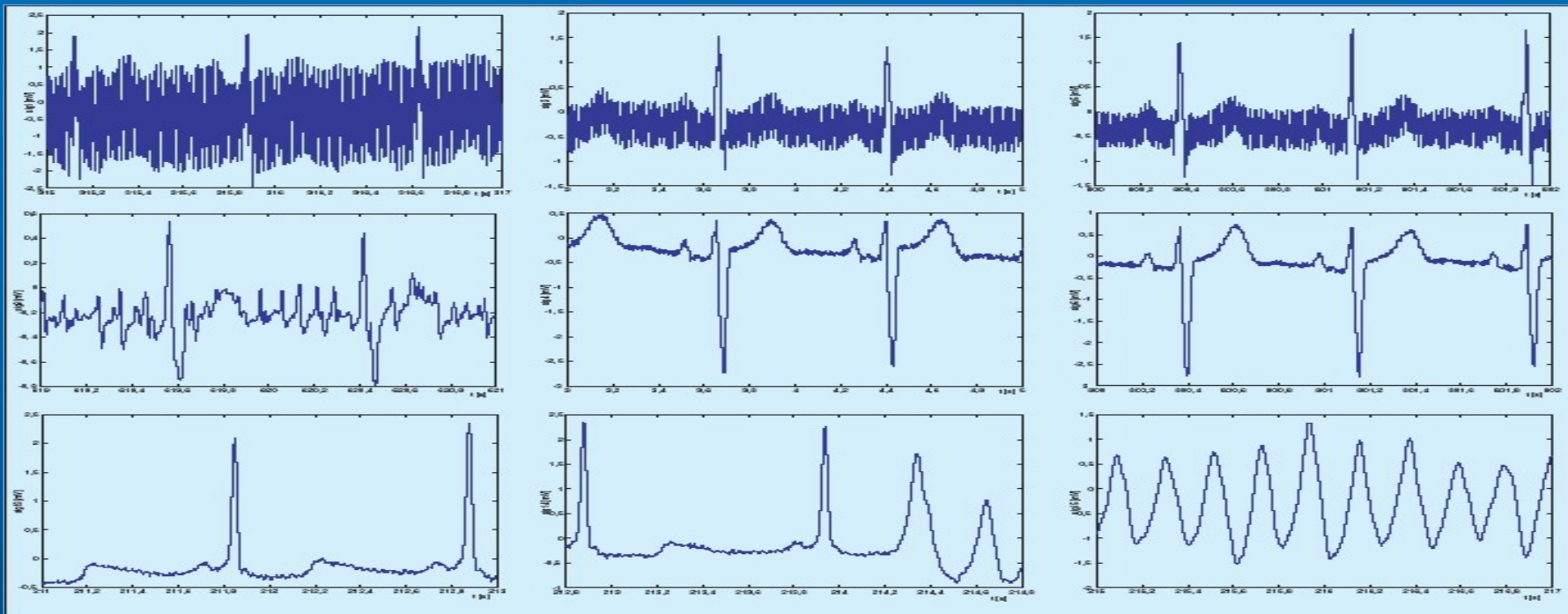
- **Theoretical fundamentals of mechanical engineering (3 year bachelor)**
- **Information and Automation Technology (4 year bachelor)**
- **Automation and Instrumentation Technology (2 year master)**



CTU
CZECH TECHNICAL
UNIVERSITY
IN PRAGUE

Department of Instrumentation and Control Engineering Selected projects

EKG signal analysis

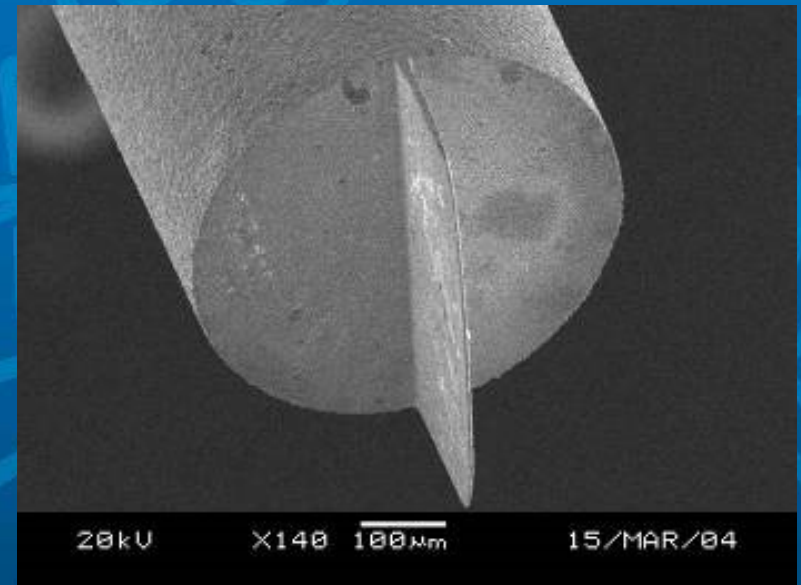




CTU
CZECH TECHNICAL
UNIVERSITY
IN PRAGUE

Department of Instrumentation and Control Engineering Selected projects

Micromanufacturing



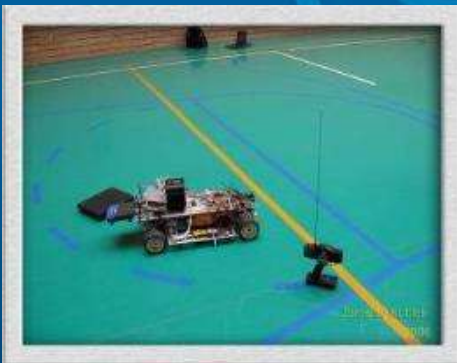


CTU

CZECH TECHNICAL
UNIVERSITY
IN PRAGUE

Department of Instrumentation and Control Engineering Selected projects

Control systems



SMALL



Jízda proti pohyblivé
překážce

Jaroslav Kutílek 2006/2007

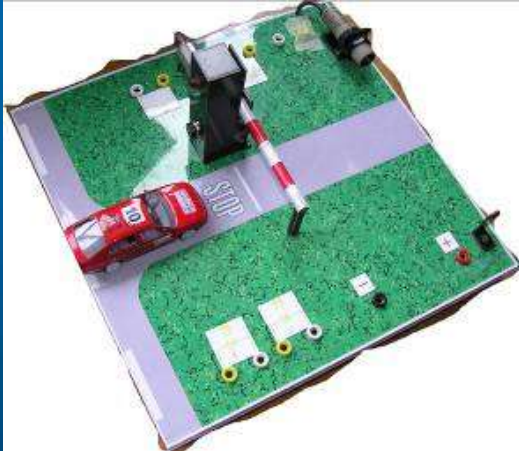




CTU
CZECH TECHNICAL
UNIVERSITY
IN PRAGUE

Department of Instrumentation and Control Engineering Selected projects

Electrical engineering labs

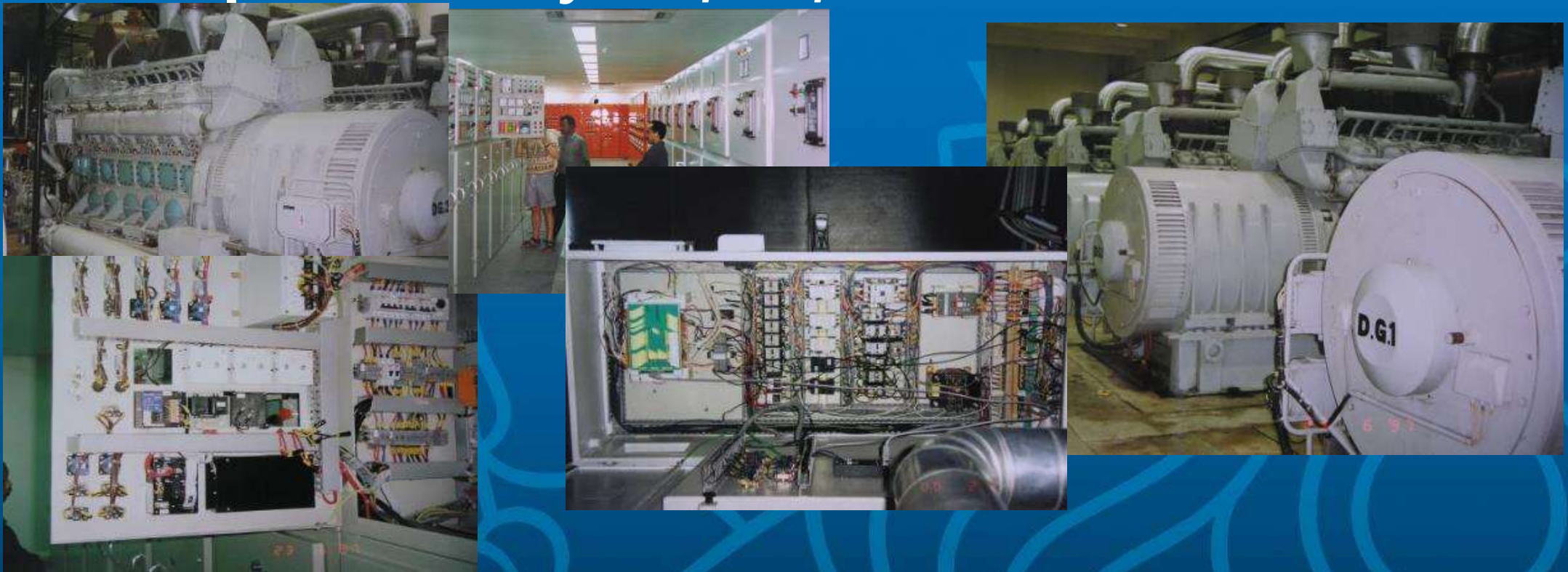




CTU
CZECH TECHNICAL
UNIVERSITY
IN PRAGUE

Department of Instrumentation and Control Engineering Selected projects

Power plant control system, Bali, Indonesia



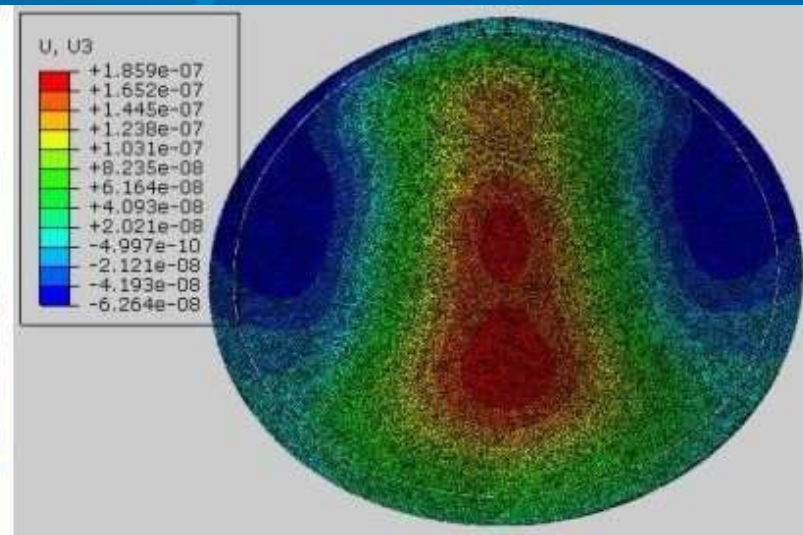
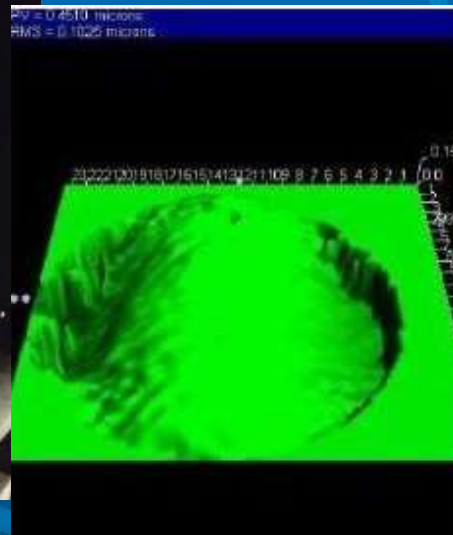
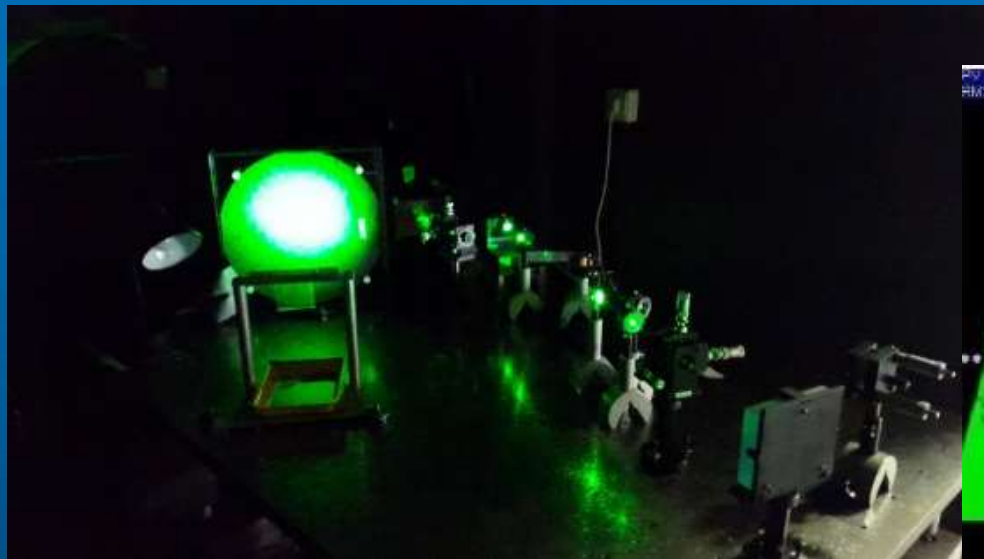


CTU

CZECH TECHNICAL
UNIVERSITY
IN PRAGUE

Department of Instrumentation and Control Engineering Selected projects

Adaptive mirrors for lasers

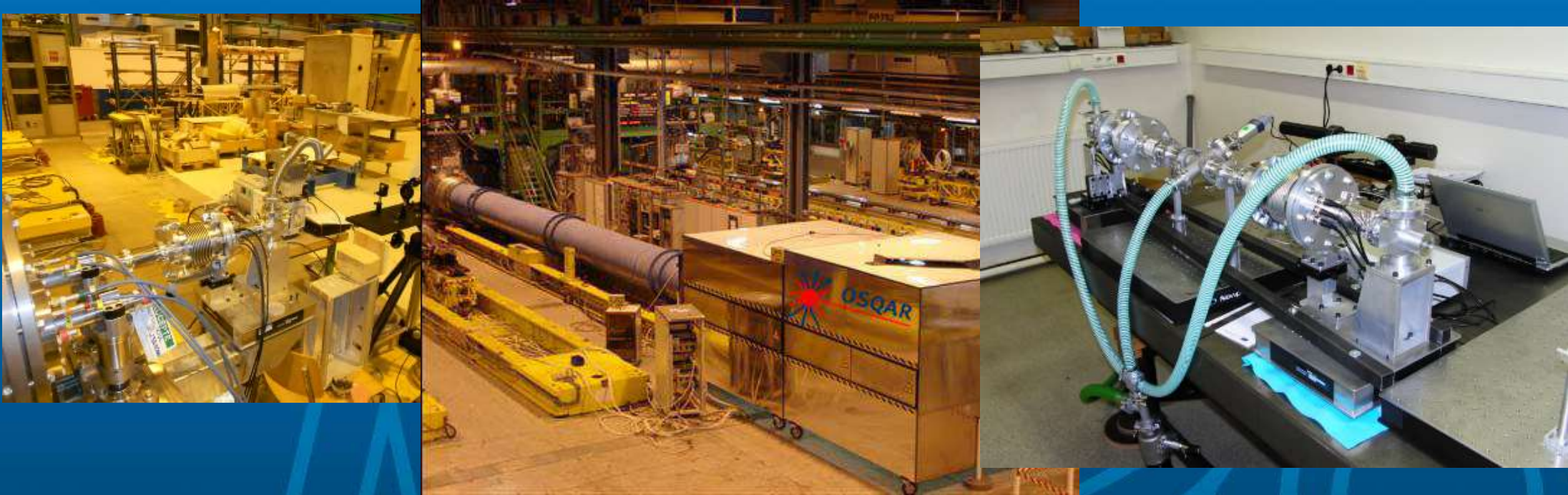




CTU
CZECH TECHNICAL
UNIVERSITY
IN PRAGUE

Department of Instrumentation and Control Engineering Selected projects

Collaboration with CERN, project OSQAR





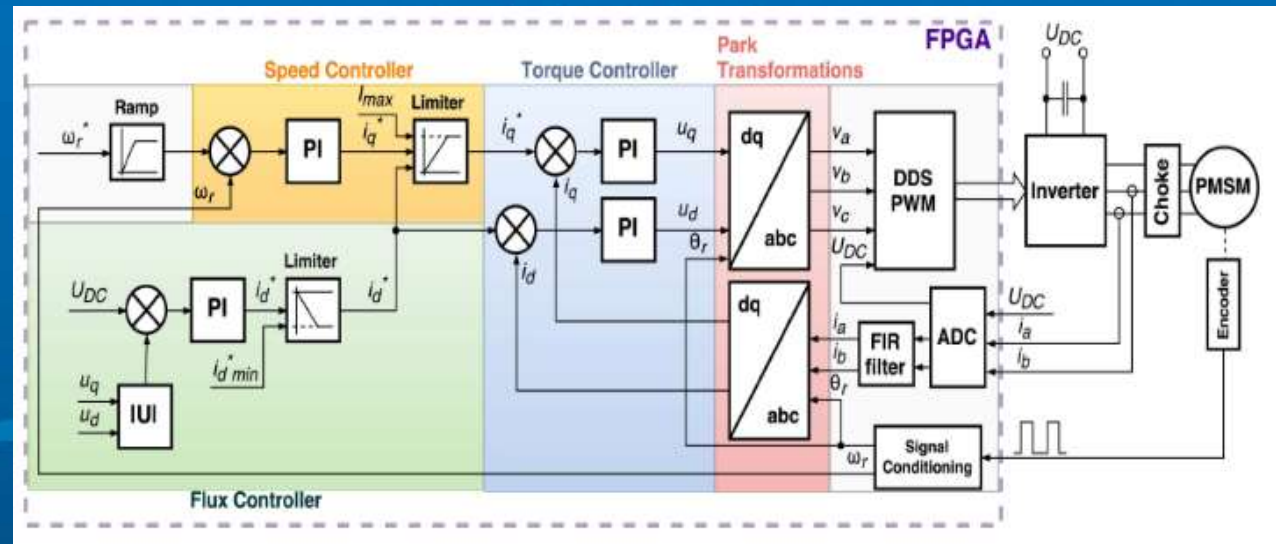
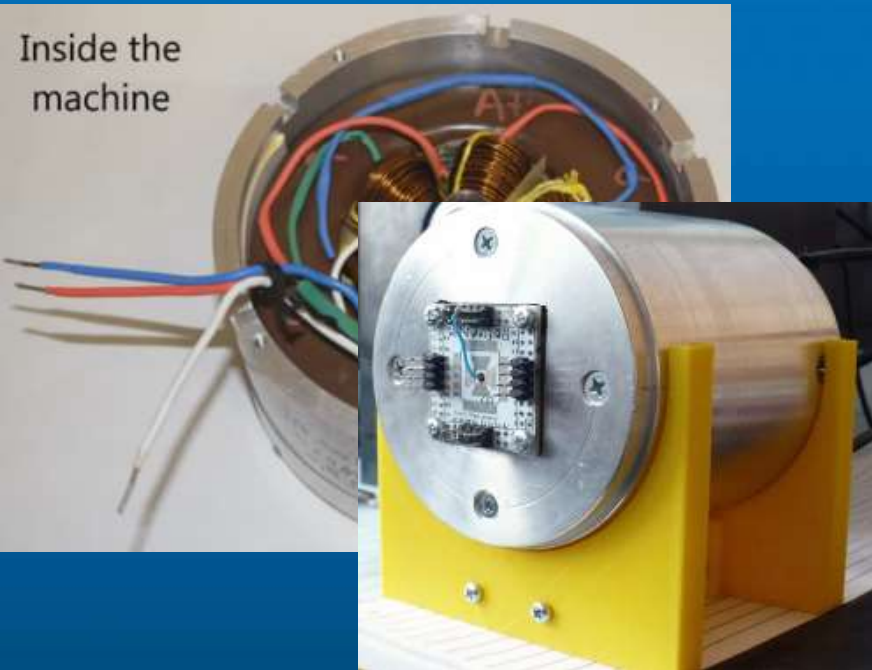
CTU

CZECH TECHNICAL
UNIVERSITY
IN PRAGUE

Department of Instrumentation and Control Engineering Selected projects

High speed electric machines, control and power electronics

Inside the
machine





CTU
CZECH TECHNICAL
UNIVERSITY
IN PRAGUE

Department of Instrumentation and Control Engineering Selected projects

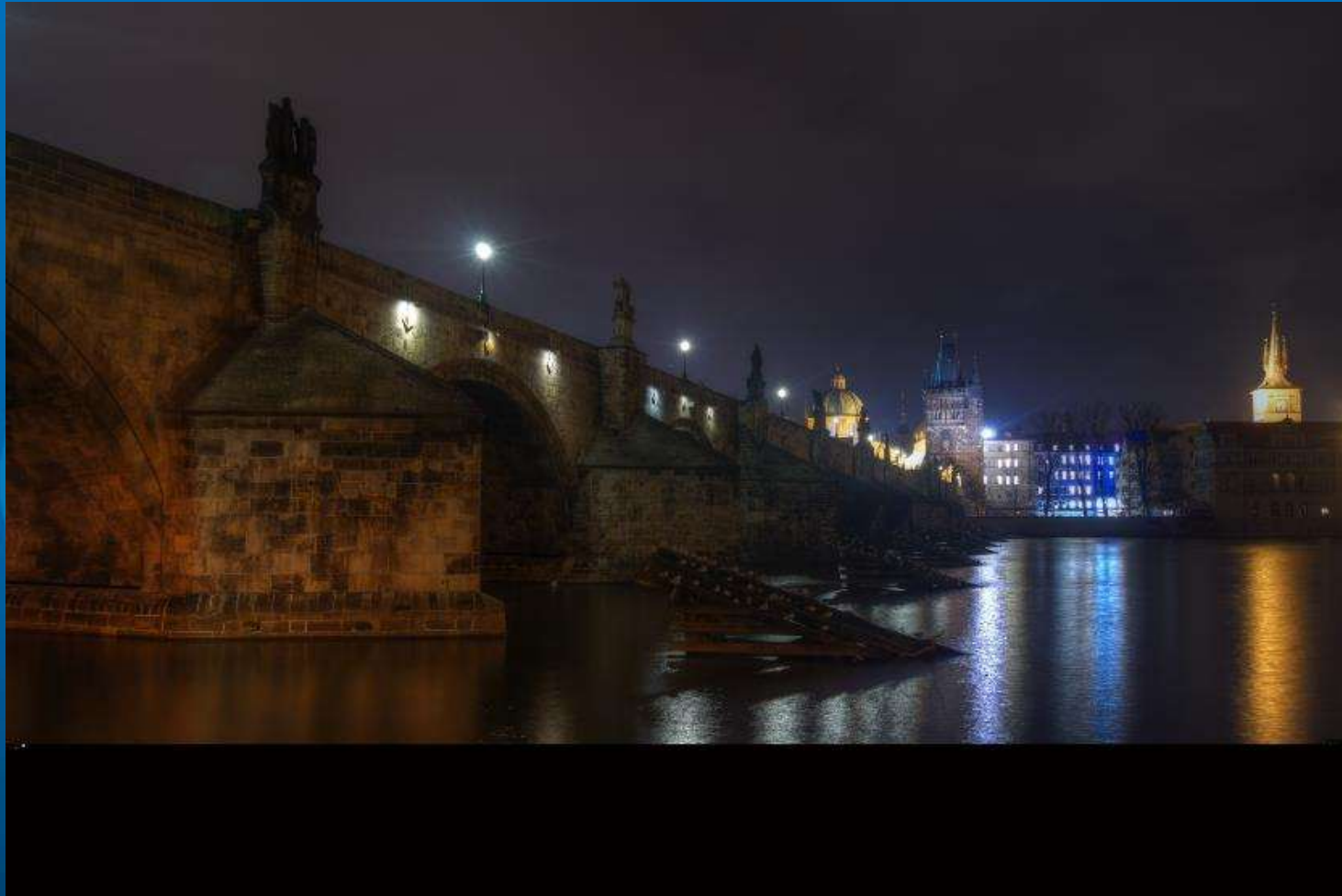
Design of devices for algae cultivation





CTU
CZECH TECHNICAL
UNIVERSITY
IN PRAGUE

Prague

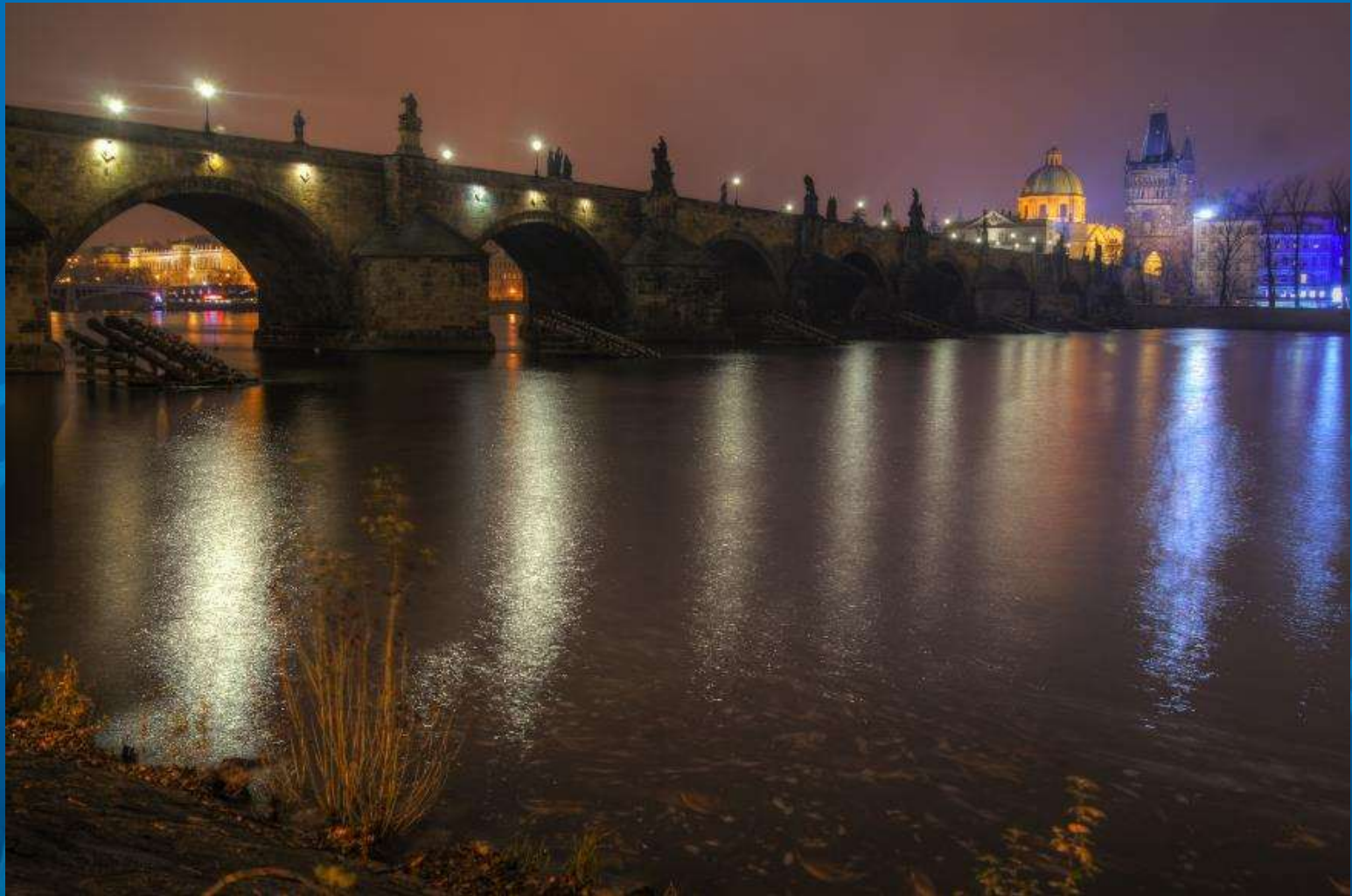




CTU

CZECH TECHNICAL
UNIVERSITY
IN PRAGUE

Prague

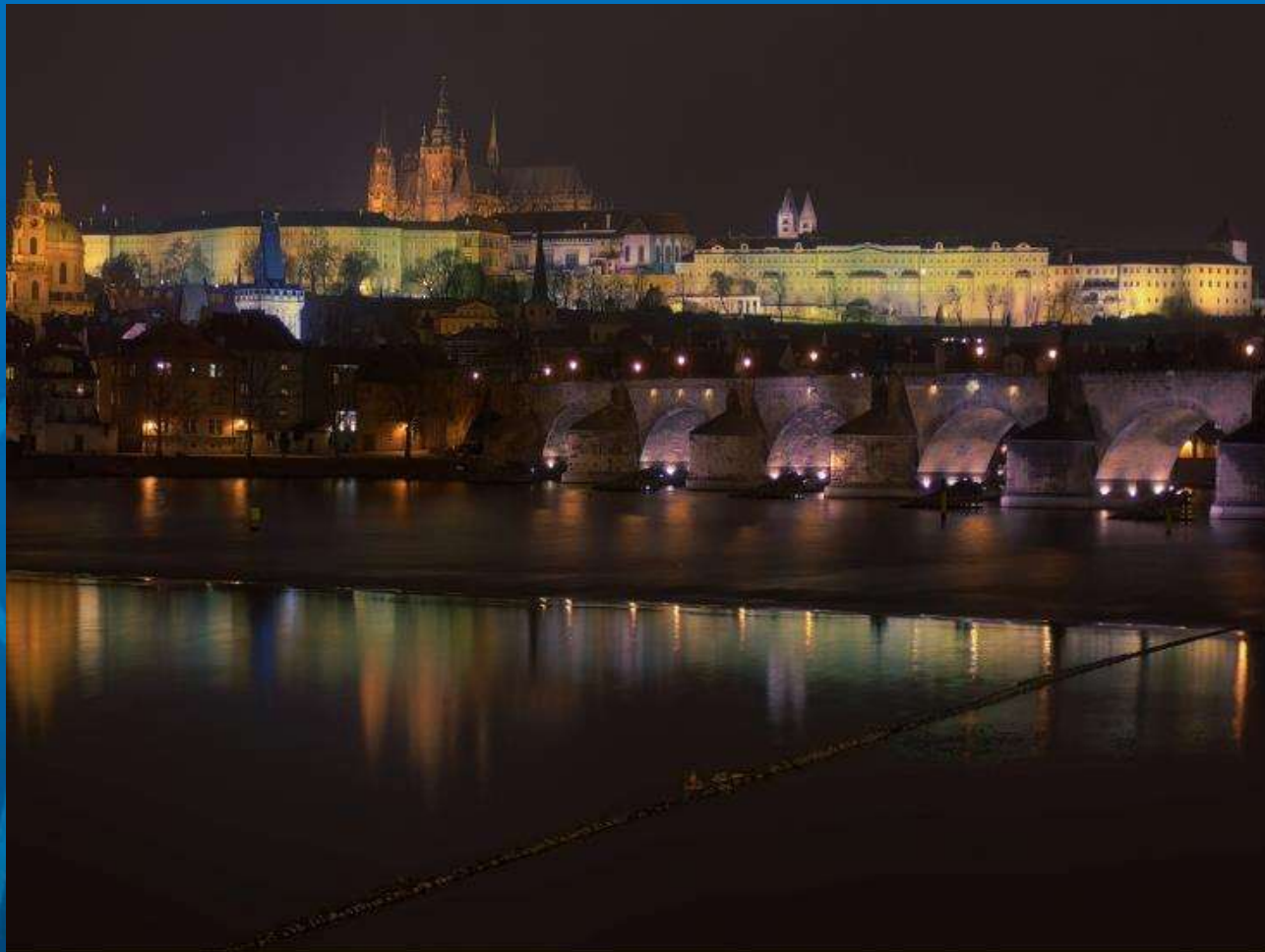




CTU

CZECH TECHNICAL
UNIVERSITY
IN PRAGUE

Prague





CTU

CZECH TECHNICAL
UNIVERSITY
IN PRAGUE

Prague

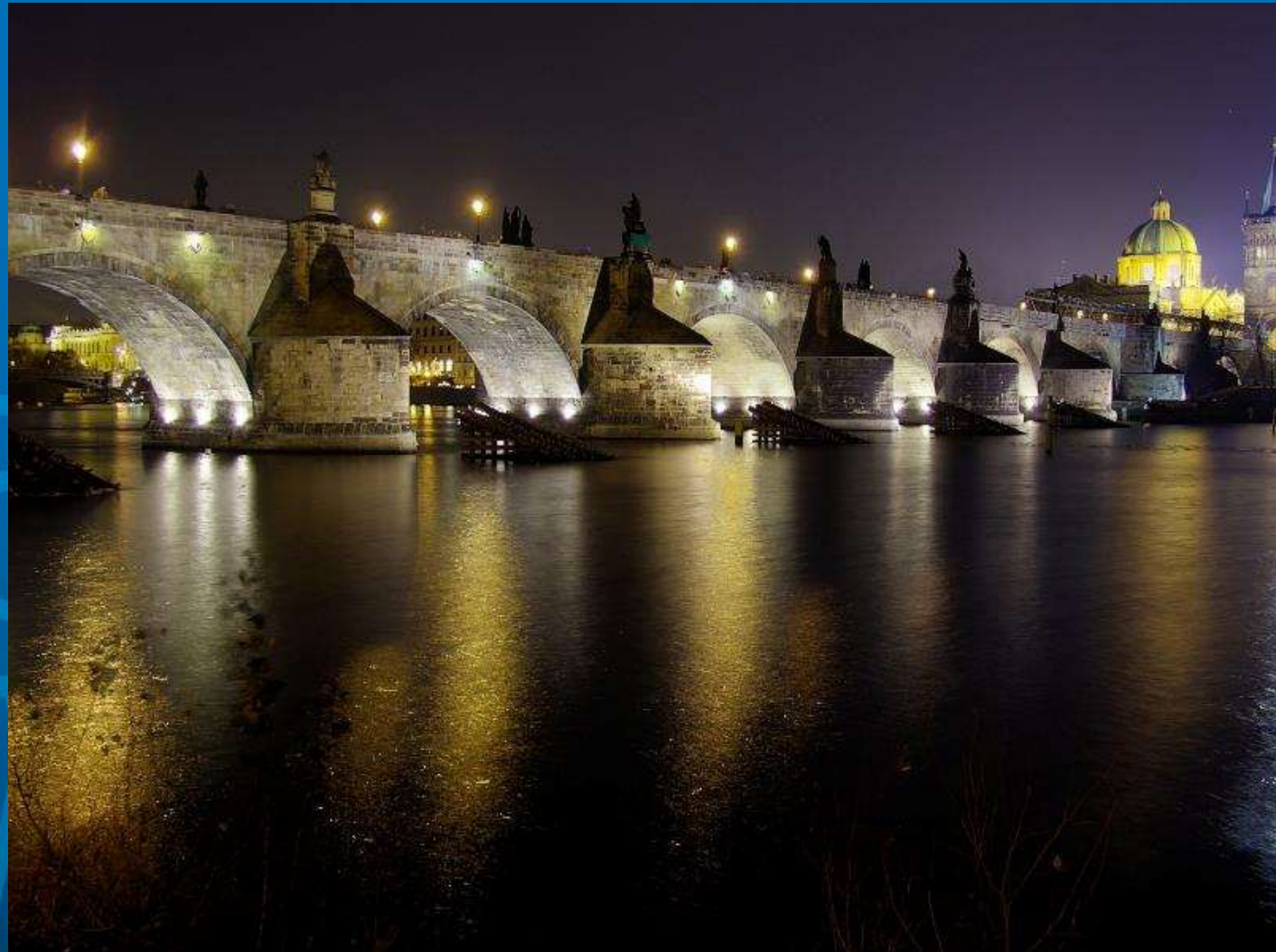




CTU

CZECH TECHNICAL
UNIVERSITY
IN PRAGUE

Prague





CTU

CZECH TECHNICAL
UNIVERSITY
IN PRAGUE

Prague





How can you come

Erasmus -> yes, for 1 or 2 semesters. Most classes are taught in English (not all),

see <https://mobility.cvut.cz/prospectus/2020/>

Internship at our department: yes



CTU
CZECH TECHNICAL
UNIVERSITY
IN PRAGUE

Questions?

Contact:

Martin.Novak@fs.cvut.cz

